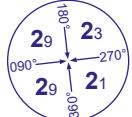
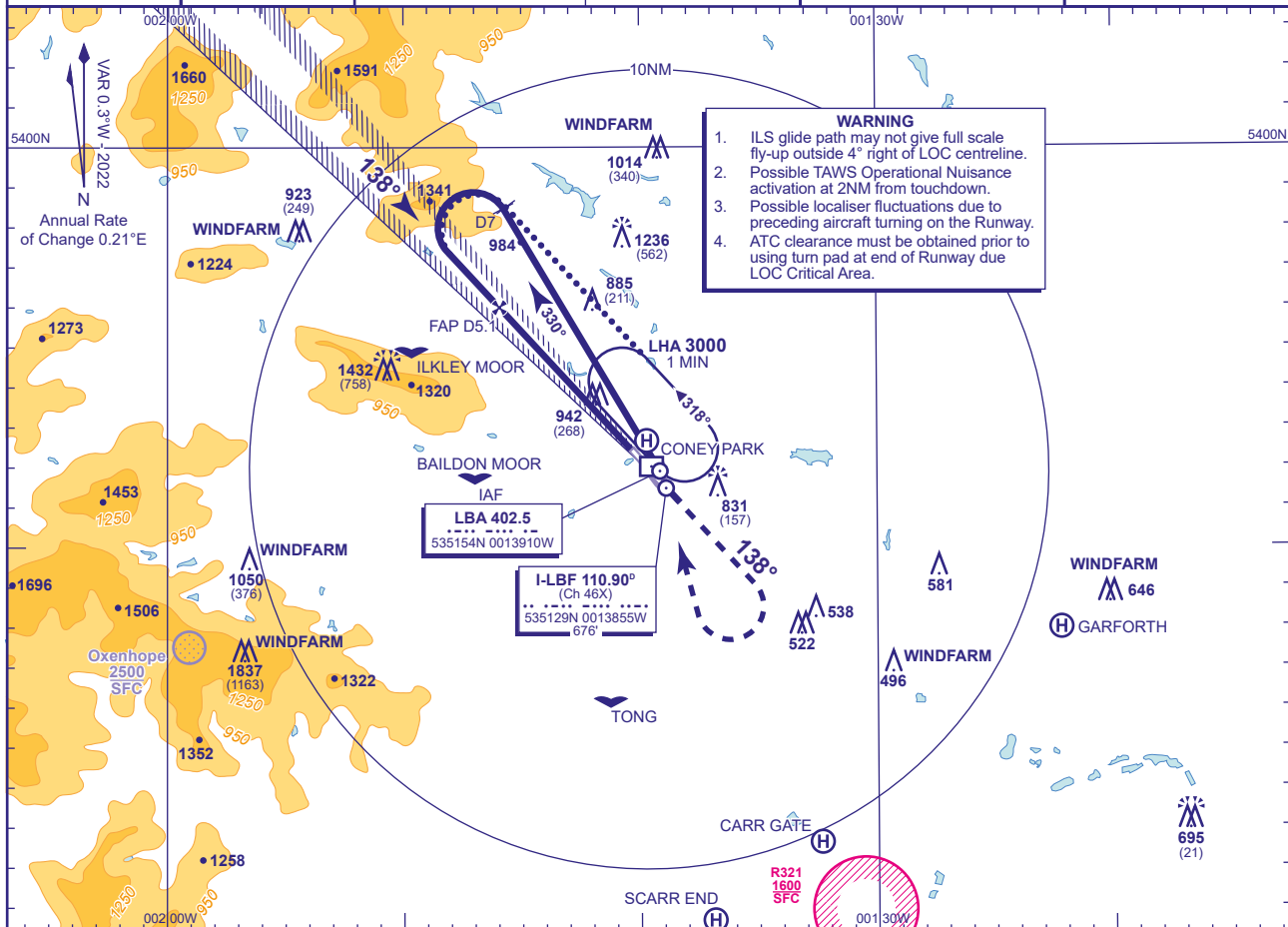
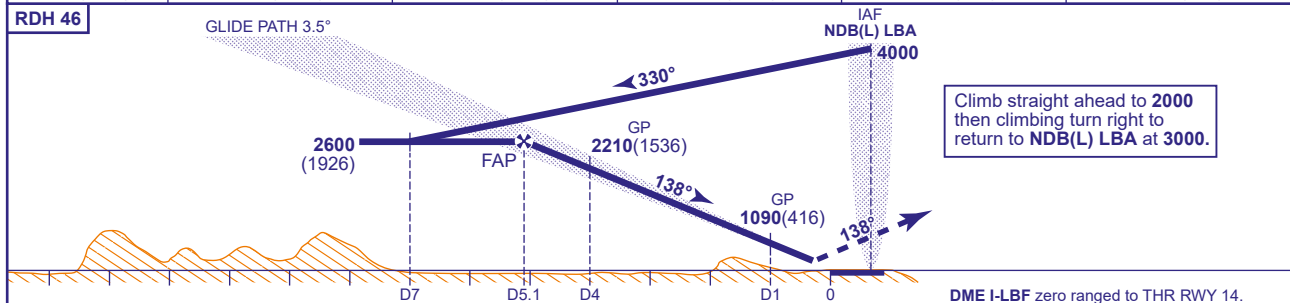
 MSA 25NM LBA	 MSA 10NM LBA	APP 134.580	LEEDS APPROACH	AD ELEVATION <b>682</b>	TRANSITION ALTITUDE <b>5000</b>
		TWR 120.305	LEEDS TOWER	THR ELEVATION <b>674</b>	
		RAD 134.580	LEEDS RADAR	OBSTACLE ELEVATION <b>1837 AMSL</b> (1163) (ABOVE THR)	
		125.380	LEEDS DIRECTOR		
		ATIS 118.030	LEEDS INFORMATION	BEARINGS ARE MAGNETIC	



RECOMMENDED PROFILE GLIDE PATH 3.5°, 370FT/NM					
DME I-LBF	5	4	3	2	1
ALT(HGT)	2580(1906)	2210(1536)	1840(1166)	1460(786)	1090(416)



Aircraft Category		A	B	Rate of descent	G/S KT	160	140	120	100	80
OCA (OCH)	CAT I	827(153)	837(163)		FT/MIN	990	870	740	620	500
VM(C)OCA (OCH AAL)	Total Area	1320(638)	1320(638)							

**ALTERNATIVE PROCEDURE EXTENDED HOLDING PATTERN**  
Overhead NDB(L) LBA in holding pattern, turn left and descend on extended outbound leg to **2600(1926)**. At I-LBF DME 7 turn left to intercept the localizer. When established continue as Main Procedure.

**NOTE**

1. Lowest altitude to commence procedure from hold is **3000**.
2. Due to controlled airspace constraints, aircraft may temporarily leave controlled airspace in the base turn.